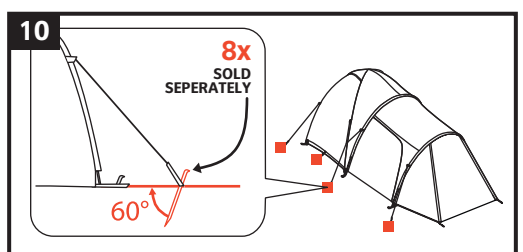
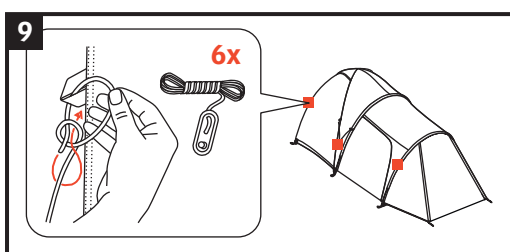
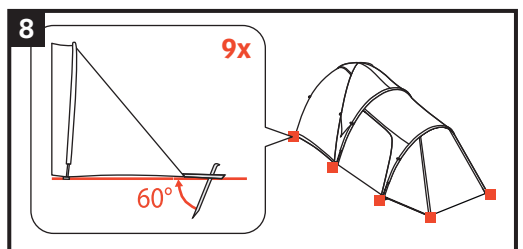
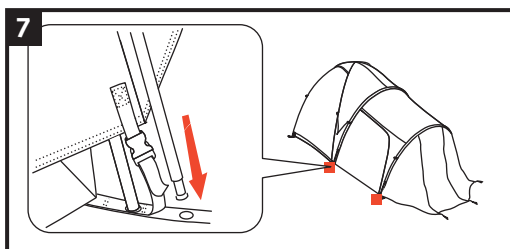
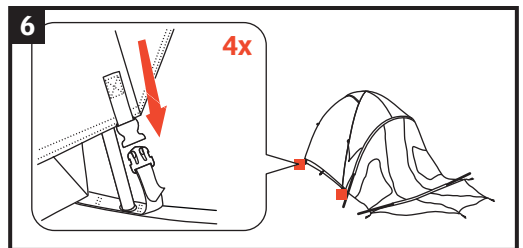
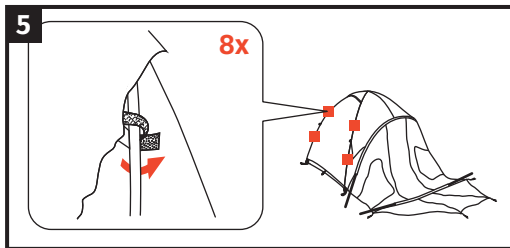
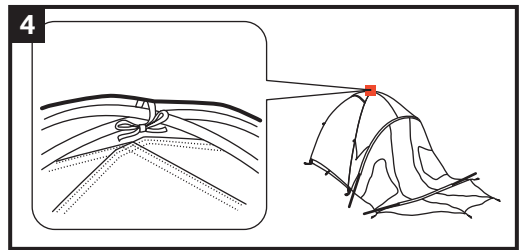
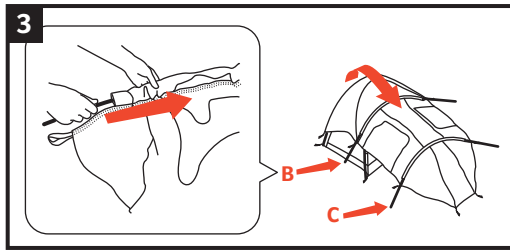
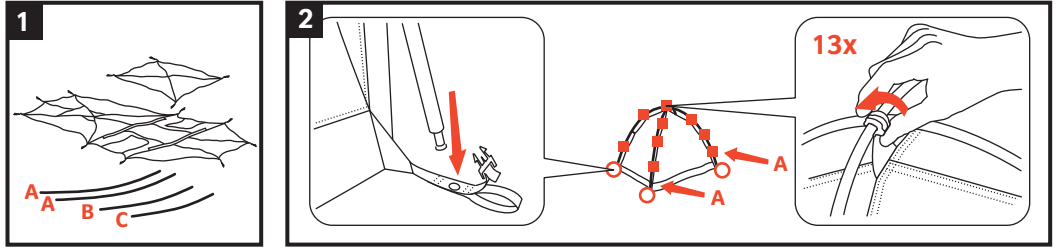


CAMPO CASA XT 5P

Camping Family

Aufbauanleitung / pitching instruction



Achtung! Erhöhte Materialermüdung durch dauerhafte UV-Einwirkung, wenn möglich immer einen Schattenplatz wählen! Schütze dein Zelt vor Alterung durch Sonne und Regen mit Nikwax Tent & Gear Solarproof.

Attention! Higher aging of material by permanent UV-impact, always prefer a sun protected pitching place if possible! Protect your tent from sun and rain damage with Nikwax Tent & gear Solarproof



Erfahre mehr über dein Zelt unter:
<http://www.vaude.com/de-DE/Produkte/Zelte/>
 For further information about your tent please visit:
<http://www.vaude.com/en-GB/Products/Tents/>